

SERVING THE FOOD INDUSTRY SINCE 1951

## MIXER ACCESSORIES AND ATTACHMENTS

### GRINDER HEAD ATTACHMENT FOR MIXERS

With available units compatible for #12 and #22 drive hubs. Complete with a cast iron worm, ring, and cylinder, this grinder head ensures durability and efficiency, while its stainless steel feed pan, 1/4" plate and meat stomper allows for easy cleaning. With available units compatible with any number 12 take-off hub, this grinder attachment can be used to make the most out of your mixer. Also available in stainless steel.



Mixer sold separately

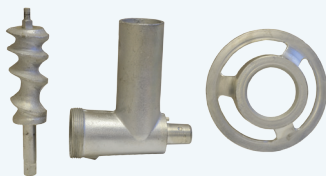


| ITEM   | DESCRIPTION  | PACKAGING WEIGHT   |
|--------|--|--------------------|
| *10051 | #12 Grinder Head Complete Unit - Fit # 12 drive hubs                   | 20 lbs./ 9 kgs.    |
| 27142  | #12 Grinder Head Complete Unit - Stainless Steel - Fit # 12 drive hubs | 22 lbs./ 10 kgs.   |
| 10058  | #22 Grinder Head Complete Unit - Fit # 22 drive hubs                   | 26 lbs./ 11.8 kgs. |
| 21229  | #22 Grinder Head Complete Unit - Stainless Steel - Fit # 22 drive hubs | 28 lbs./ 12.7 kgs. |

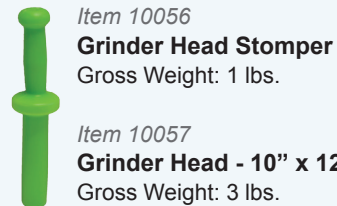


#### #12 Grinder Head Complete Unit (Item: 10051)

- Cast iron worm
- Ring
- Cylinder
- Feed pan
- #12 Machine plate
- #12 Machine knife
- Meat stomper



Item 10054  
**Grinder Head Package - Cylinder (10052), Ring (10053), Worm (10055)**  
Gross Weight: 12 lbs.



Item 10052  
**Grinder Head Cylinder**  
Gross Weight: 6 lbs.



Item 10053  
**Grinder Head Ring**  
Gross Weight: 4 lbs.



Item 10055  
**Grinder Head Worm**  
Gross Weight: 2 lbs.

**OMCAN INC.**

Telephone: 1-800-465-0234  
Fax: (905) 607-0234  
Email: sales@omcan.com  
Website: www.omcan.com



Follow us to keep up to date with the latest news and offers

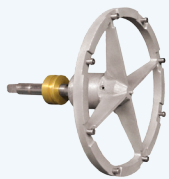


## VEGETABLE SLICER ATTACHMENT FOR MIXERS

Compatible for #12 drive hub. Complete sets include slicer door, housing, pusher with disc holder frame or S-knife.



| ITEM  | DESCRIPTION   |
|-------|---|
| 43143 | Vegetable slicer attachment complete set with disc holder |
| 43144 | Vegetable slicer attachment complete set with s-knife     |
| 43145 | Door for Slicer/Shredder Attachment                       |
| 43146 | Disc Holder Frame   |
| 43147 | Housing for Slicer/Shredder Attachment                    |
| 43148 | Pusher for Slicer/Shredder Attachment                     |
| 43150 | Adjustable Slicer Plate with s-knife                      |



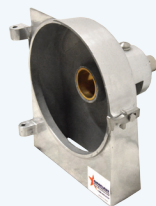
Item 43146  
**Disc Holder Frame**  
Gross Weight: 5 lbs.



Item 43150  
**Adjustable Slicer Plate with S Knife**  
Gross Weight: 7 lbs.



Item 43145  
**Door for Slicer / Shredder Attachment**  
Gross Weight: 4 lbs.



Item 43147  
**Housing for Slicer/Shredder Attachment**  
Gross Weight: 9 lbs.



Item 43148  
**Pusher for Slicer/Shredder Attachment**  
Gross Weight: 2 lbs.

### OMCAN INC.

Telephone: 1-800-465-0234  
Fax: (905) 607-0234  
Email: sales@omcan.com  
Website: www.omcan.com

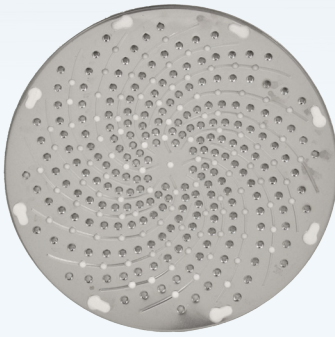


Follow us to keep up to date with the latest news and offers



## STAINLESS STEEL GRATER AND SHREDDER DISCS

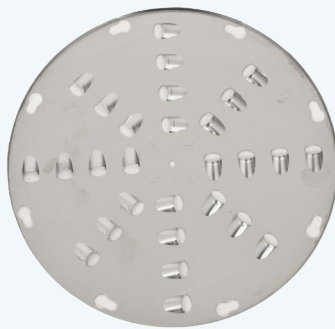
Our stainless steel grater and shredder discs are constructed for heavy-duty use. Ensure a reliable performance and durability. Disc holder frame required.



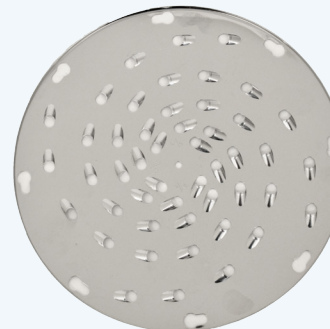
*Item 10132*  
**Stainless Steel Grater Disc**  
Gross Weight: 1 lbs.



*Item 43235*  
**Stainless Steel Shredder Disc With 3/16" / 4.8 mm Holes**  
Gross Weight: 1 lbs.



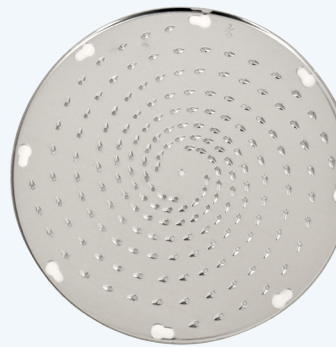
*Item 10133*  
**Stainless Steel Shredder Disc With 1/2" / 12 mm Holes**  
Gross Weight: 1 lbs.



*Item 43237*  
**Stainless Steel Shredder Disc With 5/16" / 8 mm Holes**  
Gross Weight: 1 lbs.



*Item 10134*  
**Stainless Steel Shredder Disc With 1/4" / 6 mm Holes**  
Gross Weight: 1 lbs.



*Item 10136*  
**Stainless Steel Shredder Disc With 3/32" / 2.3 mm Holes**  
Gross Weight: 1 lbs.

### OMCAN INC.

Telephone: 1-800-465-0234  
Fax: (905) 607-0234  
Email: [sales@omcan.com](mailto:sales@omcan.com)  
Website: [www.omcan.com](http://www.omcan.com)



Follow us to keep up to date with the latest news and offers



## REPLACEMENT ACCESSORIES FOR GENERAL PURPOSE MIXERS

Flat beater, wire whip, dough hook and hopper available for Omcan's 10-qt / 20-qt / 30-qt / 60-qt general purpose mixers.

### Replacement Accessories For 10-Qt Mixer 20467 / 13181



20467

Mixer sold separately

| ITEM  | DESCRIPTION                   |
|-------|-------------------------------|
| 25061 | Wire whip for 20467 / 13181   |
| 25062 | Dough hook for 20467 / 13181  |
| 25066 | Flat beater for 20467 / 13181 |
| 25090 | Bowl for 20467 / 13181        |

### Replacement Accessories For 20-Qt Mixer 20441 / 17835



20441

Mixer sold separately

| ITEM  | DESCRIPTION                   |
|-------|-------------------------------|
| 25153 | Wire whip for 20441 / 17835   |
| 25154 | Dough hook for 20441 / 17835  |
| 25155 | Flat beater for 20441 / 17835 |
| 25157 | Bowl for 20441 / 17835        |

### Replacement Accessories For 20-Qt Mixer 39390



39390

Mixer sold separately

| ITEM  | DESCRIPTION           |
|-------|-----------------------|
| 25723 | Hook for 39390        |
| 25724 | Flat beater for 39390 |
| 25725 | Wire whip for 39390   |
| 25727 | Bowl for 39390        |

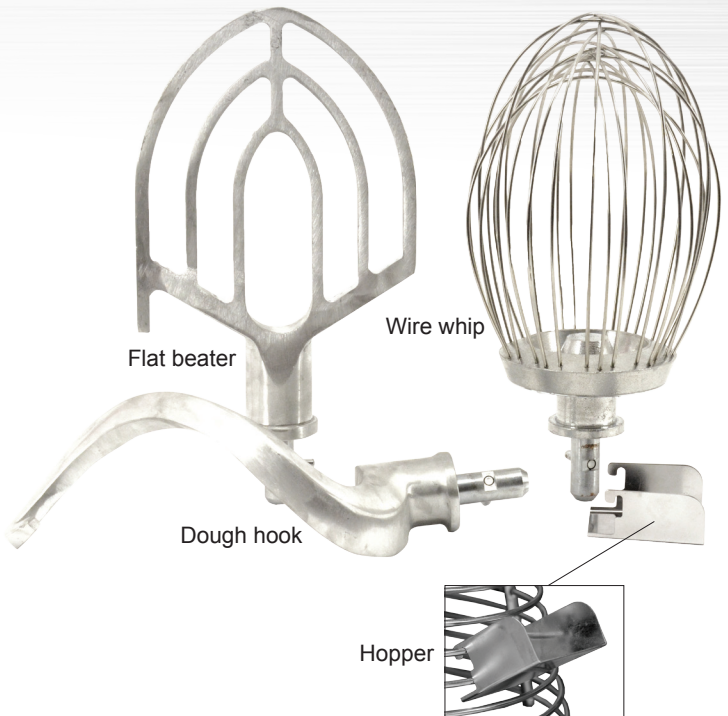
### Replacement Accessories For 30-Qt Mixer 20442 / 17836



20442

Mixer sold separately

| ITEM  | DESCRIPTION                   |
|-------|-------------------------------|
| 24953 | Wire whip for 20442 / 17836   |
| 24951 | Dough hook for 20442 / 17836  |
| 24952 | Flat beater for 20442 / 17836 |
| 24955 | Bowl for 20442 / 17836        |



### Hopper for 10 / 20 / 30-Qt Mixer

| ITEM  | DESCRIPTION                        |
|-------|------------------------------------|
| 28718 | Hopper for Mixer - Stainless Steel |

### Replacement Accessories For 60-Qt Mixer 19999



19999

Mixer sold separately

| ITEM  | DESCRIPTION                |
|-------|----------------------------|
| 24663 | Wire whip for 19999        |
| 24667 | Dough arm - hook for 19999 |
| 24669 | Flat beater for 19999      |

Product not actually as shown

**OMCAN INC.**

Telephone: 1-800-465-0234

Fax: (905) 607-0234

Email: sales@omcan.com

Website: www.omcan.com



Follow us to keep up to date with the latest news and offers



## HOBART COMPATIBLE UNIVERSAL ATTACHMENTS & MIXER BOWLS

A reliable mixer attachment is not only help to improve your work performance, but also enhance productivity and efficiency in your kitchen. Our universal attachments and stainless steel mixer bowls are available in various sizes to meet your needs.

### Hobart Compatible Universal Attachments



Whip



Flat Beater



Dough Hook

(Picture is based on 20 Qt Accessories. Product may not be exactly as shown.)

| ITEM  | DESCRIPTION                   | GROSS WEIGHT      |
|-------|-------------------------------|-------------------|
| 10097 | 20 QT Flat Beater Attachment  | 3 lbs./ 1.4 kgs.  |
| 10098 | 30 QT Flat Beater Attachment  | 5 lbs./ 2.3 kgs.  |
| 17606 | 60 QT Flat Beater Attachment  | 7 lbs./ 3.2 kgs.  |
| 17609 | 80 QT Flat Beater Attachment  | 10 lbs./ 4.5 kgs. |
| 17612 | 140 QT Flat Beater Attachment | 25 lbs./ 11 kgs.  |
| 10078 | 20 QT Dough Hook Attachment   | 4 lbs./ 2 kgs.    |
| 10079 | 30 QT Dough Hook Attachment   | 6 lbs./ 2.7 kgs.  |
| 17607 | 60 QT Dough Hook Attachment   | 10 lbs./ 4.5 kgs. |
| 17610 | 80 QT Dough Hook Attachment   | 17 lbs./ 7.7 kgs. |
| 17613 | 140 QT Dough Hook Attachment  | 25 lbs./ 11 kgs.  |
| 10237 | 20 QT Whip Attachment         | 4 lbs./ 2 kgs.    |
| 10238 | 30 QT Whip Attachment         | 6 lbs./ 2.7 kgs.  |
| 17605 | 60 QT Whip Attachment         | 8 lbs./ 3.6 kgs.  |
| 17608 | 80 QT Whip Attachment         | 10 lbs./ 4.5 kgs. |
| 17611 | 160 QT Whip Attachment        | 19 lbs./ 8.6 kgs. |

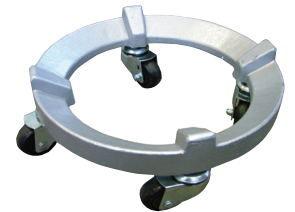
### Stainless Steel Mixer Bowls



| ITEM  | DESCRIPTION                                  | GROSS WEIGHT       | DIMENSIONS (Dia x H)            |
|-------|--|--------------------|---------------------------------|
| 14246 | 20 QT Stainless Steel Mixer Bowl             | 12 lbs./ 5.4 kgs.  | 14" x 11"/ 356 x 279 mm         |
| 23509 | 20 QT Stainless Steel Mixer Bowl Light Gauge | 12 lbs./ 5.4 kgs.  | 14" x 11"/ 356 x 279 mm         |
| 14247 | 30 QT Stainless Steel Mixer Bowl             | 18 lbs./ 8 kgs.    | 15.5" x 13.25"/ 394 x 336.6 mm  |
| 14248 | 60 QT Stainless Steel Mixer Bowl             | 28 lbs./ 12.7 kgs. | 19.25" x 16.75"/ 489 x 425.5 mm |
| 14249 | 80 QT Stainless Steel Mixer Bowl             | 34 lbs./ 15.4 kgs. | 21.5" x 18.5"/ 546 x 470 mm     |
| 18266 | 140 QT Stainless Steel Mixer Bowl            | 72 lbs./ 32.6 kgs. | 25" x 26"/ 635 x 660 mm         |

### Bowl Dolly

Steel-painted bowl dolly provides easy mobility for you perfectly mixed ingredients.



| ITEM  | DESCRIPTION                                      | GROSS WEIGHT       | DIMENSIONS (Dia x H)        |
|-------|--|--------------------|-----------------------------|
| 23512 | Bowl Dolly, steel-painted, fits 30 -140 QT bowls | 30 lbs./ 13.6 kgs. | 16.5" x 7.25"/ 419 x 184 mm |

Hobart compatible universal attachments and mixer bowls are not suitable for Omcan 20441/ 17835/ 20442/ 17836/ 19999/ 20467/ 13181/ 39390 mixers

**OMCAN INC.**

Telephone: 1-800-465-0234

Fax: (905) 607-0234

Email: sales@omcan.com

Website: www.omcan.com



Follow us to keep up to date with the latest news and offers

